

# ICLC 15

---

# Conference Handbook

Crosslinguistic Perspectives on  
Cognitive Linguistics

August 6–11, 2019  
Kwansei Gakuin University, Japan



The Fifteenth International Cognitive Linguistics Conference (ICLC 15) is the fifteenth biennial conference of the International Cognitive Linguistics Association (ICLA), hosted by the Japanese Cognitive Linguistics Association (JCLA).

Conference web page: <https://iclc2019.site/>

E-mail: [iclc2019@2jcla.jp](mailto:iclc2019@2jcla.jp)

Twitter: @iclc15

Venue: Kwansei Gakuin University

(Address) 1-155 Uegahara-1bancho, Nishinomiya, Hyogo, Japan

**Organizing committee:**

Yo Matsumoto (Chair), Kimi Akita, Yoichiro Hasebe, Naoko Hayase, Kaoru Horie, Toshiyuki Kanamaru, Yukinori Kimoto, Tetsuta Komatsubara, Miho Mano, Hiroyuki Miyashita, Yuzo Morishita, Takahiro Morita, Yoshihisa Nakamura, Kazuko Shinohara, Yumi Takagaki, Kazumi Taniguchi, Takayuki Tohno, Bing Zhu (in alphabetical order)

Assistants: Daisuke Nonaka, Yuko Morokuma

For the lists of Scientific Committee members and Track Chairs for reviews, see <https://iclc2019.site/conference-information/committee>

**Sponsors:**

International Cognitive Linguistics Association (President, Barbara Dancygier)

Japanese Cognitive Linguistics Association (President, Yukio Tsuji)

De Gruyter Mouton

John Benjamins Publishing Company

Kwansei Gakuin University

National Institute for Japanese Language and Linguistics (Crosslinguistic Studies)

Evolinguistics (MEXT Grant-in-Aid for Scientific Research for Innovative Areas)

Tsutomu Nakauchi Foundation

The Kyoto University Foundation

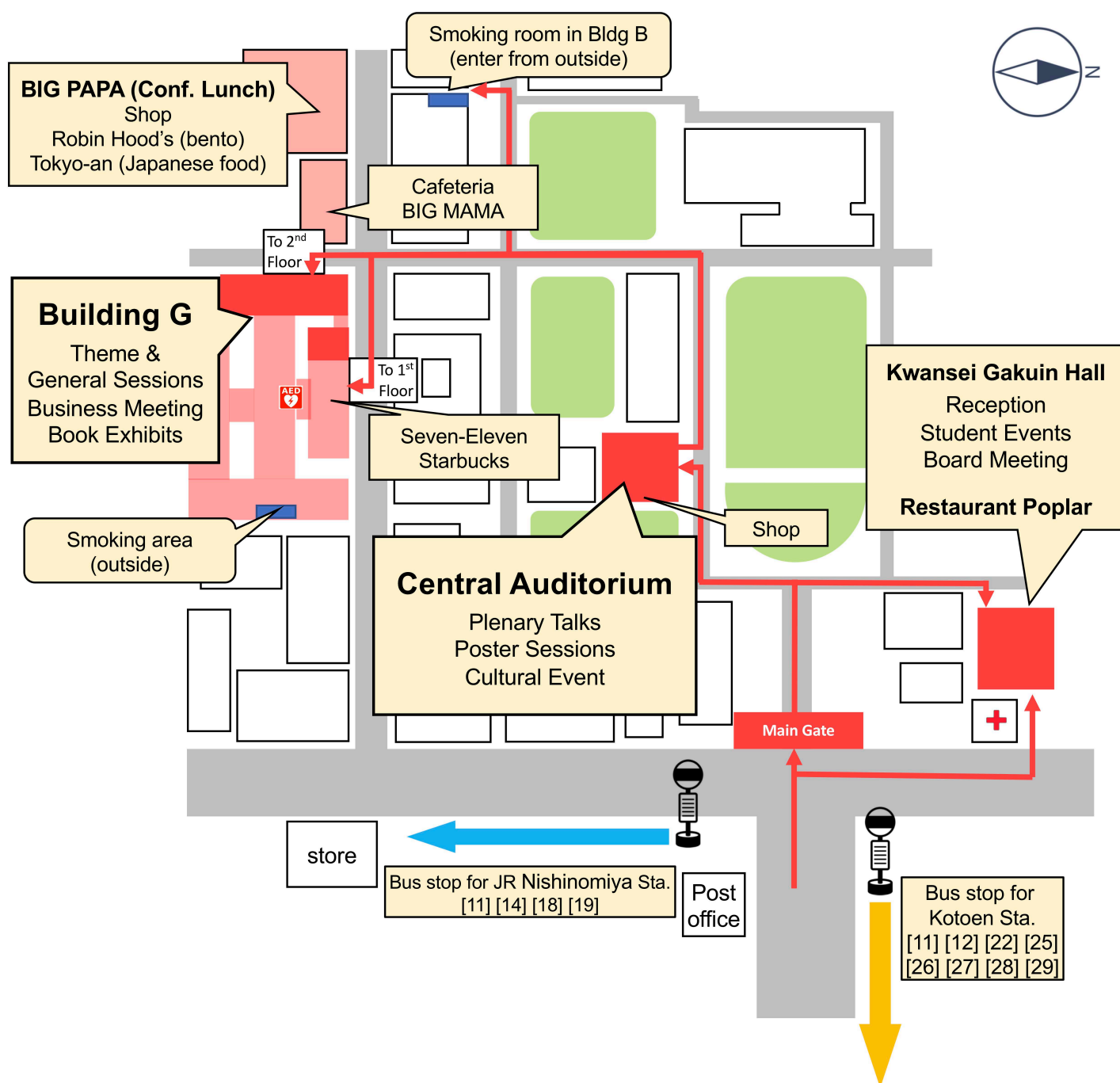
**Participating publishers:**

Brill, De Gruyter Mouton, Hituzi Syobo, John Benjamins Publishing Company

## Table of Contents

Campus Map	1
Floor Maps: Central Auditorium	2
Building G	3
Conference Program	
Aug. 6th (Tuesday)	5
Aug. 7th (Wednesday)	7
Aug. 8th (Thursday)	9
Aug. 9th (Friday morning–early afternoon)	11
Aug. 9th (Friday late afternoon)	13
Aug. 10th (Saturday)	15
Poster Sessions	
Aug. 7th	17
Aug. 8th	19
Important Information	21
Transportation (railways, taxis, and buses)	24

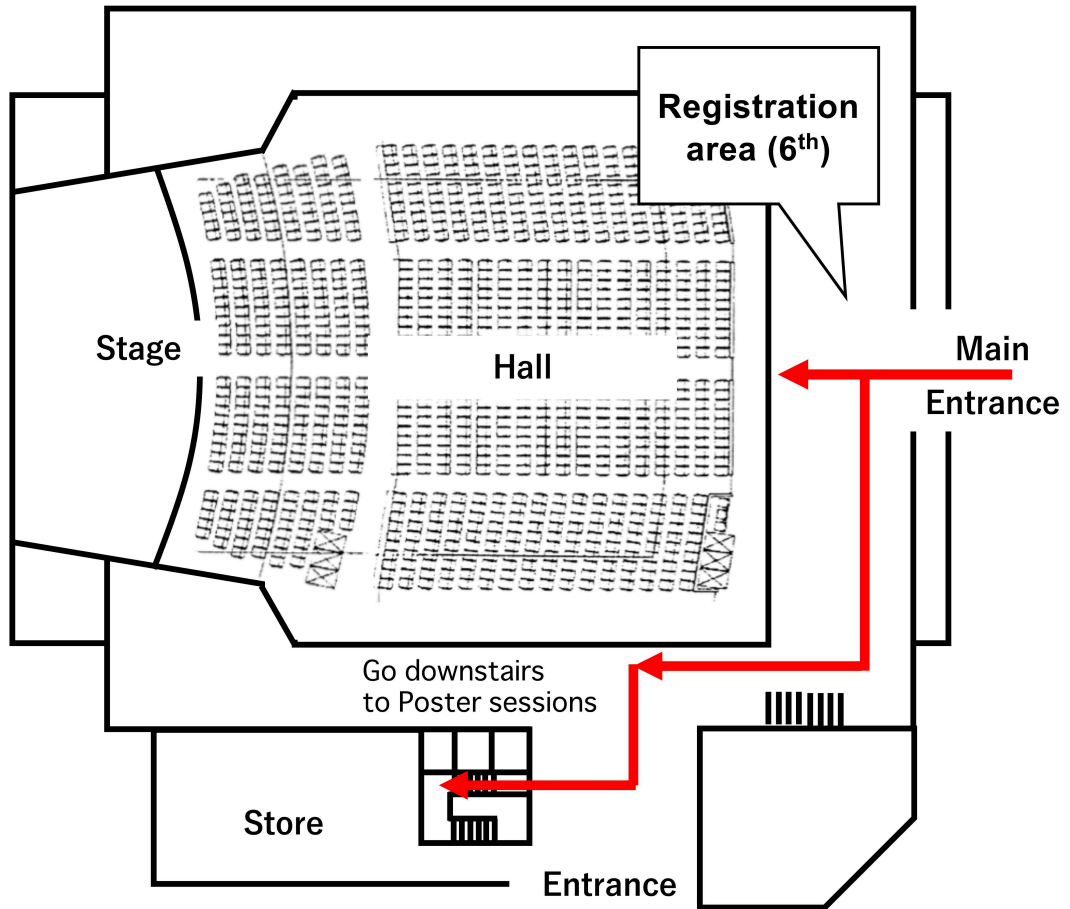
# Campus Map



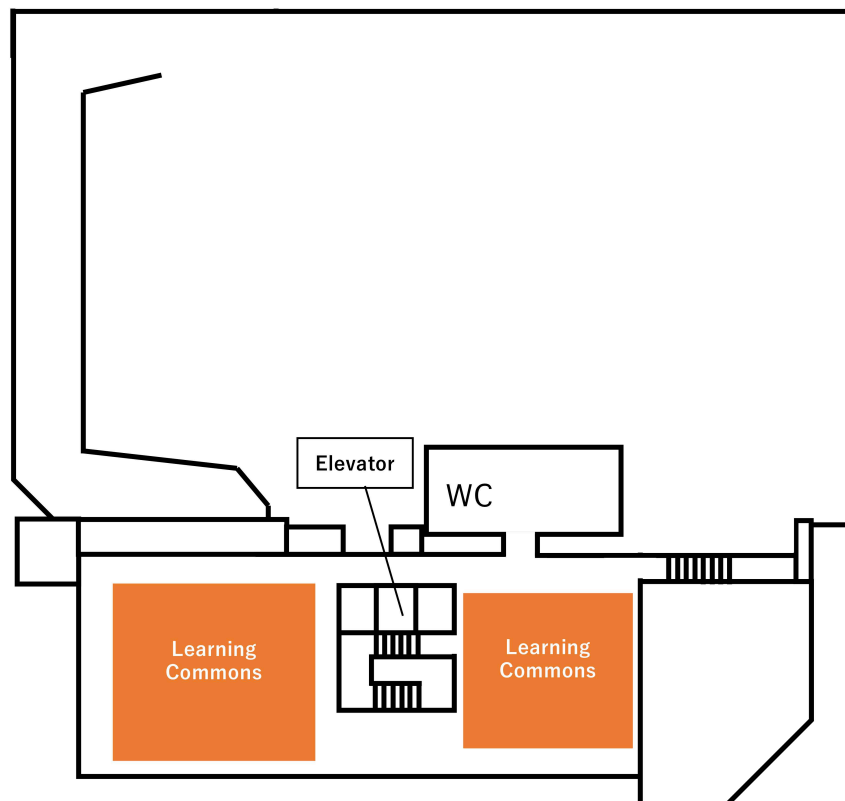


# Floor Map: Central Auditorium

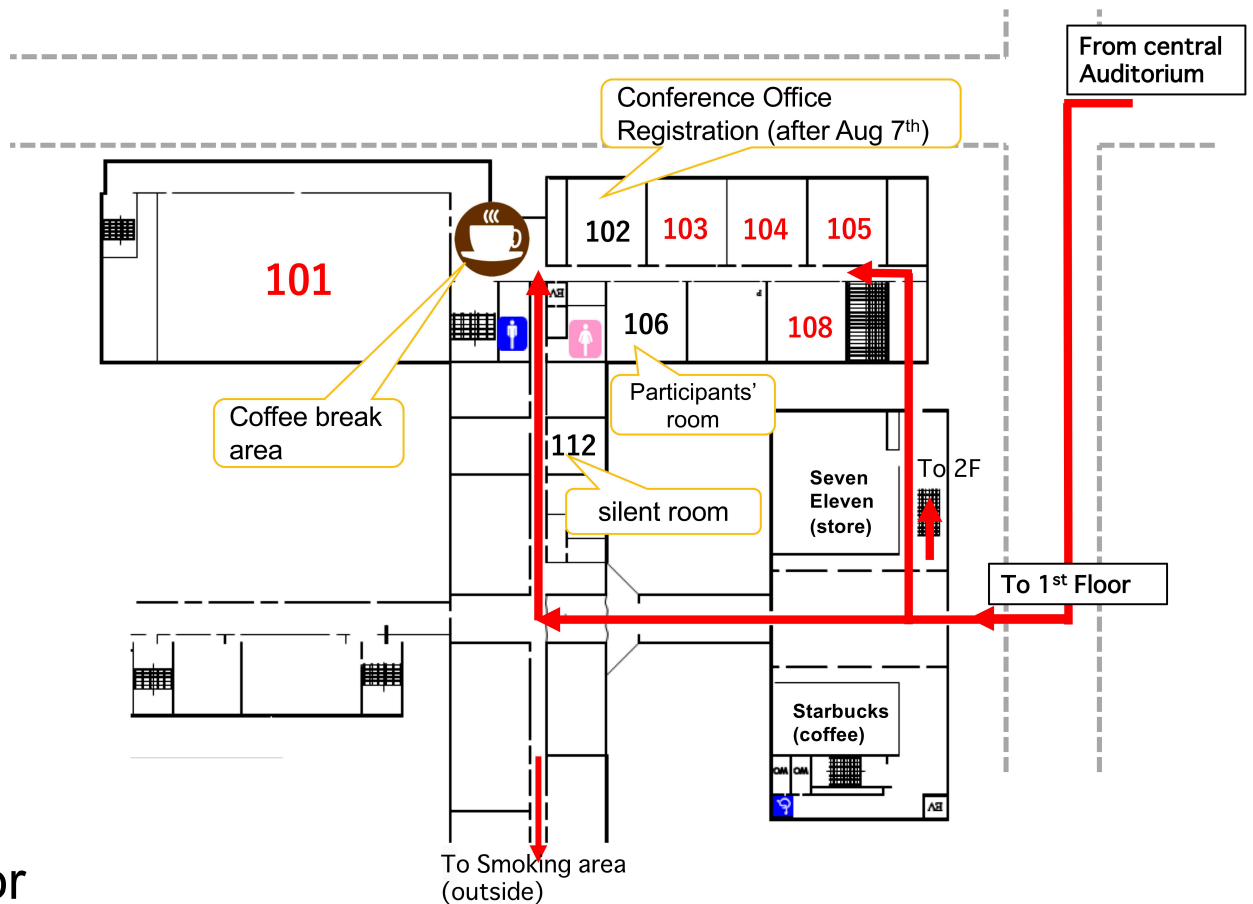
1st Floor



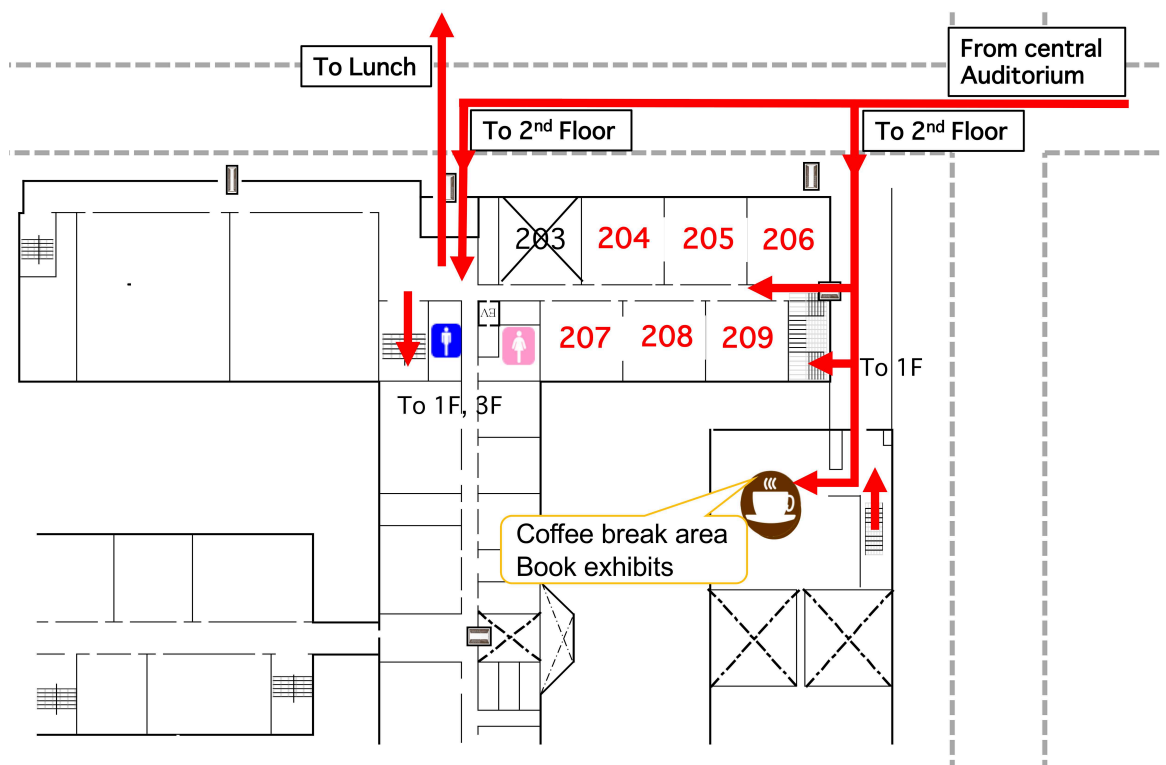
Basement



# Floor Map: Building G

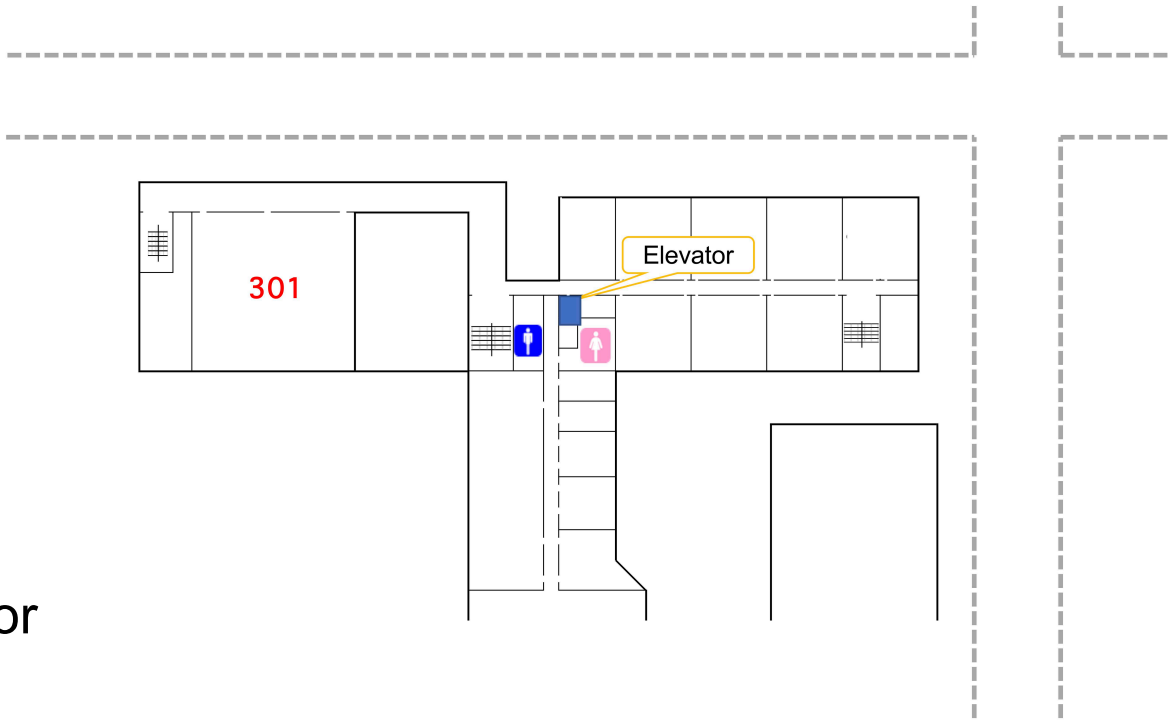


1st Floor



2nd Floor





3rd Floor

## Aug. 6<sup>th</sup> (Tuesday)

11:45–	REGISTRATION (Central Auditorium)				
13:40–14:00	OPENING (Central Auditorium)				
14:00–15:30	PLENARY 1: William Croft. Some contributions of typology to cognitive linguistics, revisited (Central Auditorium)				
15:30–15:50	BREAK (Coffee at 2nd floor lounge and near room 101 in Bldg. G)				
room #	101	103	104	105	108
category	semantics (Chair: Natalia Beliaeva)	cognitive grammar (Chair: Toshiyuki Kumashiro)	construction (Chair: Naoki Otani)	construction (Chair: John Newman)	typology (Chair: Kaoru Horie)
15:50–16:15	S. Kemmer Lexical Blending: Opening a Wider Window on the Nature of Morphemes	G. Zeng The Dynamic Focal Adjustments in Event Construal: A Case Study on English WH- Dialogic Constructions	L. Sommerer Let's talk <i>face to face</i> about N-P-N constructions in Contemporary American English	Y. Shi The Ditransitive As Resultative in Chinese	J. Li Lexicalization Patterns of Events of Causative State Change in Mandarin Chinese -from a Diachronic Perspective
16:20–16:45	D. Kjellander Ambiguity at Work: Multistable Meaning Structures in Lexical Blending	T. Kumashiro The Semantic Basis of Syntax: The Case of Quantifier Float in Japanese	Q. Meng & W. Luo The Constructional Changes of English Catenative Constructions: A case study of <i>seem to</i> vs. <i>appear to</i>	M. Xu The Grammatical Constructionalization and Cognitive Mechanisms of <i>Gěi</i> (GIVE) Construction in Mandarin	M. Kirjavainen & Y. Kite Does native language affect a speaker's ability to recall details from photos? A comparison between monolingual English and Japanese adults
16:50–17:15	N. Beliaeva & N. Knoblock Conceptual Blending in the Construction of Morphological Blends	T. Kobayashi (Discourse) Deictic Usages of Demonstrative Pronoun <i>that</i> : A Cognitive Linguistic Approach	N. Otani A constructional analysis of the ' <i>better</i> <i>off</i> construction' in English	Sh. Chen & Ch. Zheng Diachronic Collostructional Analysis on the Chinese Construction "V lai V qu"	N. Chancharu The Carto-Conceptual Network models of indefinite pronouns and negation: Where linguistic typology meets cognitive linguistics
category	semantics (Chair: Dirk Geeraerts)	cognitive grammar (Chair: Susanne Flach)	construction (Chair: Reijirou Shibasaki)	construction (Chair: Lotte Sommerer)	
17:25–17:50	I. Tragel & J. Klavan Draw free, think aloud: The image schematic representation of Estonian abstract verbs	A. De Wit & Ph. De Brabanter The use of the English progressive with verbs of communication: An epistemic analysis	R. Shibasaki <i>The question remains is</i> whether constructions are in the making: Constructionalization at work	H. Jia Exploring the Cognitive Mechanisms of Psych Causative Alternation Verbs in Mandarin Chinese: A Corpus- based Approach	
17:55–18:20	X. Zhang On the Semantic Restrictions of Monosyllabic Sensory Adjectives in Metaphorical Expressions: Evidence from Mandarin Chinese	Sh. Sasaki An Analysis of <i>to</i> - Infinitives as Clausal Subjects	Y. Tsushima The Constructionalization of Implicit Theme Resultative Constructions as a 'Snowclone' in English	Hs.-Hs. Hung Language Productivity and Representation: A Corpus-Based Study of [da - NP] Construction	
18:30–20:00	Reception (Kwansei Gakuin Hall)				

**Pre-event:** Lectures on the Japanese language from cognitive/typological perspective. Sponsored by NINJAL  
10:00–12:00, Room #206, Building G.



REGISTRATION (Central Auditorium)

OPENING (Central Auditorium)

Plenary 1: William Croft. Some contributions of typology to cognitive linguistics, revisited (Central Auditorium)

BREAK (Coffee at 2nd floor lounge and near room 101 in Bldg. G)

204	205	206	207	208	209
metaphor (Chair: Kazuko Shinohara)	metaphor (Chair: Kojiro Nabeshima)	pragmatics (Chair: Ryoko Uno)	multimodality (Chair: Geert Brône)	sociolinguistics (Chair: Gitte Kristiansen)	applied linguistics (Chair: Teresa Molés-Cases)
H-L. Lai Playful Metaphors in Hakka Jokes and Pragmatic-Cultural Implications	E. Wnuk & Y. Ito Heart-based emotion metaphors in Mlabri (Austroasiatic, Thailand)	Y. Hirose Where the awareness condition comes from: Cross-linguistic generalizations about viewpoint reflexives in English and Japanese	H-Ch. Hsu Speech-embedded non-verbal depictions: Embeddedness and structural complexities	W. Zhang et al. Analyzing lexical variation in regional varieties of Chinese: A concept-based approach	D. O. Jackson Pre-service English teachers' dialogic descriptions of motion: Task effects and trouble sources
E. Sweetser & Sch. LaParle War is war - or is it? Different genres show different metaphors for cancer	L. Suárez-Campos Exploring the concept of anger in Bulgarian thought embodied metaphors	Ch-Y. Chester Hsieh Subject, Stance, and Sequence: An Interactional Construction Grammar Approach to the False-belief Verb <i>Yiwei</i> in Mandarin Conversation	A. Jehoul Filled pauses from a cognitive and pragmatic perspective: how eye-tracking improves our knowledge of linguistic elements	G. Kristiansen & J. Martin Tevar Cognitive Grammar Matters: Revisiting Linguists' Use of Question Types in Attitude Research	D. Nakamura Effects of task procedural repetition on lexical diversity and clausal complexity in L2 written narrative production of motion events
Y. Choi Metonymy Affects Grammar: Korean Double Object Constructions	T. Zhang & J. Zhan A cognitive approach to metaphors and metonymies: A case of the emotion "xi" (HAPPINESS) in Chinese	K. van Krieken Linguistic Patterns of Viewpoint Transfer in News Narratives			E. Soroli et al. Event integration mechanisms across languages and their psychological reality
	metaphor (Chair: Karen Sullivan)	pragmatics (Chair: Masako U. Fidler)	multimodality (Chair: Tomoko Endo)	sociolinguistics (Chair: Maarten Lemmens)	applied linguistics (Chair: Reyes Llopis-Garcia)
	D.C. Strack Contemporaneous embodied experience influences metaphor comprehension	L. Vilkki Epistemic and inferential expressions in linguistic research articles: A contrastive (English-Finnish) corpus-based analysis	T. Endo Bodily Behavior as Constructional Meaning: The Case of Benefactive Construction in Japanese Family Interaction	M. Lemmens et al. Gender stereotypes, neologisms, and concept-formation	Y. Liao et al. Directional prepositions and the dynamics of motion event representation
	T. Xu & X. Wang Is Humor Embodied? - An empirical study of humor perception in Chinese	R. Becerra A corpus-based analysis of two "mystery" discourse particles in Mapudungun	J. Pelkey Kinesthetic Pattern Grammar in the Yama-Bhavacakra: Markedness, Blending and Bodily Midline Mimesis	G. Kristiansen Asymmetries in Pluricentric Language Perceptions	R. Llopis-Garcia Space, radial networks and prototypes: a cognitive approach to prepositions in Spanish/L2 pedagogy
Reception (Kwansei Gakuin Hall)					

## Aug. 7<sup>th</sup> (Wednesday)

8:20–9:00	COFFEE (near room 101 in Bldg. G)				
9:00–10:30	PLENARY 2: Jeannette Littlemore. Sources of Variation in ‘Embodied’ Metaphor: Theoretical and Real-world Consequences (Central Auditorium)				
10:30–10:50	BREAK (Coffee at 2nd floor lounge and near room 101 in Bldg. G)				
room #	101	103	104	105	108
category	THEME: Stance-stacking in language and multimodal communication (Organizers: B. Dancygier, S. Rice & T. Janzen)	construction (Chair: Russell Lee-Goldman)	grammar (Chair: Elizaveta Tarasova)	motion (Chair: Fuyin Th. Li)	categorization (Chair: Mariann Proos)
10:50–11:15	B. Dancygier et al. Introduction to the Theme Session	L. Sommerer & E. Zehentner A convent of sisters without a mother superior? – Discussing abstract nodes in the constructional network	Q. Cheng Trajector-object Variants in Chinese BA-construction—A Cognitive Approach		D. Glynn The meaning of <i>time</i> . Polysemy, usage and conceptual structure
11:20–11:45	T. Janzen When is an adjective not an adjective? Stance markers have to go somewhere!	Th. Herbst & P. Uhrig The "mini-construction" – a first step towards designing a Reference Construction of English	B. Zhu On the Chinese insubordinate conditional clause formed by the particle NE: A constructionist perspective	T. Molés-Cases & P. Cifuentes-Férez Some advances in the translation of Manner and boundary-crossing in motion events: An English-German/Spanish/Catalan experiment	D. Kosheleva A radial category model for future tense in Russian: when the future is not future
11:50–12:15	S. Rice Epistemics, evidentials, and other higher-order predicates in Dene Suliné: Packing the post-verbal stance stack	A. Endresen et al. Building a Construction for Russian: How to identify families of constructions?	E. Tarasova & J. A. Sánchez Fajardo Exploring the evaluative nature of Adj+ie/y nominalisations in contemporary English	L. Stocker & R. Berthele The roles of language dominance and language mode in bilingual motion event encoding	A. Biryukova & D. Glynn Boredom is sad: A behavioural case study of near-synonyms in Russian
12:15–13:15	LUNCH (BIG PAPA or other locations)				
category	THEME (cont.)	frame (Chair: Tetsuya Kogusuri)	THEME: Macro-events, Grammaticalization, and Typology (Organizer: F. Th. Li)	motion and space (Chair: Kyoko Inoue)	categorization (Chair: Iraide Ibarretxe-Antuñano)
13:15–13:40	J. Hinnell & S. Rice The embodied marking of stance in North American English: Stacked and idiomatic	H-Ch. Lin What can a story do? – A frame semantic approach to constructing meanings on phrasal verbs	F. Th. Li Evolutionary Order of Macro-events in Mandarin	P. Prasertsom The Goal bias effects on frequencies of different path types and the (ir)relevance of animacy and literalness	Th. Van Hoey Radiant suns, burning fires and brilliant flowers: The onomasiology and radical support of Chinese literary LIGHT ideophones
13:45–14:10	B. Dancygier & A. Lou It's like if constructions and stance off-loading in multimodal artifacts	K. Sullivan Anti-Muslim framing in Australian social media	L. Zhang The difficulty gradient of change-of-state events for human construal demonstrated in the expansion of Chinese framing satellites	B. Palmer et al. Demographic diversity and variation in spatial behavior within language communities	K. Zurbuchen & M. Uusküla We do not talk much about smell here: A preliminary study of the semantics of olfaction in Estonian and German
14:15–14:40	B. Dancygier & J. Hinnell Communicative load-sharing: Stance construction in multimodal, multi-media contexts	T. Kogusuri A Frame-Constructional Approach to Emphatic Reflexives in Japanese	J. Du & F. (Th.) Li The Conceptual Boundary Among break, cut and open: A Diachronic Semantic Perspective	A. Alshehri Use and Understanding of Intrinsic Frames of Reference	M. Proos Letting meaning surface: a corpus-based study of Estonian perception verbs
14:45–15:10	C. Müller A recurrent gesture in multimodal stance-stacking: the “Negative-Assessment Construction”	K. E. Moore Coextension-path fictive motion and metaphor typology	L. Yu Beyond Typology: How Event Integration Works in Motion Events—A Case Study of “V + Dao” Constructions in Mandarin		J. Campbell-Larsen Verbs of visual perception and category violations
15:10–15:30	BREAK (Coffee at 2nd floor lounge and near room 101 in Bldg. G)				
15:30–16:50	POSTER SESSION (Learning Commons (Basement of Central Auditorium))				
16:50–17:00	BREAK				
17:00–18:30	PLENARY 3: Martin Hilpert. Causation, Culture, and Constructional Change (Central Auditorium)				
18:50–20:45	Board Meeting / Student Events (Kwansei Gakuin Hall)				



## COFFEE (near room 101 in Bldg. G)

## PLENARY 2: Jeannette Littlemore. Sources of Variation in 'Embodied' Metaphor: Theoretical and Real-world Consequences (Central Auditorium)

## BREAK (Coffee at 2nd floor lounge and near room 101 in Bldg. G)

204	205	206	207	208	209
metaphor (Chair: Kevin E. Moore)	change (Chair: Lihong Huang)	corpus (Chair: Jane Klavan)	acquisition (Chair: Chiung-chih Huang)	<b>THEME:</b> Roles of gesture and body movement in communication (Organizers: H. Kobayashi & S. Kita)	Applied & Neuro Linguistics (Chair: Joseph Tomei)
Ch. Huang A Cognitive Approach to Translating Conceptual Metaphors in Legal Language	L. Huang & A. Tyler A Cognitive Linguistics Account of the Chinese Particle <i>Le</i>	Cy. Grandin et al. What makes us choose which modal? Putting semantic, syntactic and lexical factors in the balance	B. Juska-Bacher & L. Stocker Assessing vocabulary depth in school beginners	S. Aussems & S. Kita The role of seeing gestures in children's word learning and event memory	R. L. Peralta et al. Reading Journal Abstracts: An Eye-tracking Study of University EFL Students' Online Reading Behavior
I. Šeškauskienė Metaphor in legal translation: space as a source domain English and Lithuanian	Ph. H. Nguyen & K. Sullivan When a polysemous word grammaticalizes, does it stay polysemous? Evidence from Vietnamese path verbs	A. Ch-H. Chen Constituency, sequentiality, and prosody: A corpus-based analysis of phraseological sequences in Mandarin spontaneous speech production	S. de Pontonx & Ch. Parisse Children's acquisition of the notion of reference time: constructing a world within language	E. Yamamoto & K. Hiraki Does voluntary production of body movement have long-term effects on infants' learning about others' body movement?	H. Zhao & R. Wang Image Schemas in Second Language Learning of English Prepositions: An Event-Related Potential Study
P. Amarinthukrowh Utilizing the USAS semantic tagger to analyze metaphor: A case study of the US legalization of same-sex marriage discourse	S. Flach From <i>movement into action</i> to <i>manner of causation</i> : Changes in argument mapping in the <i>into-causative</i>	A. Baumann et al. Phonotactics is affected by statistical scaling laws less than the lexicon	Ch.-Ch. Huang An incremental approach to referential accessibility in mother-child conversation	Y. Ishizuka Gesture imitation increases reciprocal communication in children with autism spectrum disorder.	R. Hatchard Linguistic storage beyond the word level: The effect of multiword frequency on well-formedness of spoken utterances in aphasia

## LUNCH (BIG PAPA or other locations)

metaphor (Chair: Kohei Suzuki)	metaphor (Chair: Dezheng Feng)	corpus (Chair: Keisuke Sanada)	pragmatics (Chair: Kuniyoshi Kataoka)	<b>THEME</b> (cont.)	Applied (Chair: Masahiro Takimoto)
H. Li Moving at the Speed of Life: How Life Pace Influences Temporal Reasoning	Sh. Huang Metaphor mixing and domain integration: A case study on BODY metaphors	V. Cvrček & M. Fidler "Up close and personal vs. birds-eye view" of discourse: a corpus study of perspective using Czech data	C. Cook Part of Your World: Linguistic Indicators of Immersion in Video Games	U. Liszkowski Ontogenetic origins of the human pointing gesture	
Y. Cao & H. Li Planning for the Future: The Relationship between Conscientiousness, Temporal Focus and Implicit Space-Time Mappings	D. (W.) Feng Multimodal Metaphor in Chinese Dream Publicity Posters: Towards a Socio-functional Model of Analysis	A. Ch-H. Chen & H.-K. Su A usage-based constructionist approach to grammar: Semantic network analyses of words, constructions, and alternations	L. Manerko & A. Sharapkova Cognitive Dominance as a Driving Force of Concept Evolution in Arthurian Fiction	T. Yasuda Coordination of pointing and eye gaze in adult teaching whole/part object labels	L. Janda & F. M. Tyers Paradigms: cognitive plausibility and pedagogical application
	W-Y. Huang A Tale of Two Cities: A Multimodal Study of City Metaphors in Picture Books	R. Azemoto How gender is described: An insight from a spoken corpus	M. Okamoto Fictive interaction in prose text: An experiment on prose-to-dialogue conversion	H. Kobayashi Children's comprehension and production of different pointing gestures	R. Llopis-Garcia & I. Alonso-Aparicio Cognitive approaches to L2 pedagogy: challenges and shortcomings of empirical testing
	J. Salzinger Black and green smells: Variation in synesthetic metaphors of smell		Ł. Wiraszka Viewpoint phenomena in academic discourse: A Cognitive Linguistics account	Discussion	M. Takimoto The effects of primary metaphor on the development of EFL learners' pragmatic proficiency

## BREAK (Coffee at 2nd floor lounge and near room 101 in Bldg. G)

## POSTER SESSION (Learning Commons (Basement of Central Auditorium))

## BREAK

## PLENARY 3: Martin Hilpert. Causation, Culture, and Constructional Change (Central Auditorium)

## Board Meeting / Student Events (Kwansei Gakuin Hall)

## Aug. 8<sup>th</sup> (Thursday)

8:20-9:00	COFFEE (near room 101 in Bldg. G)				
9:00-10:30	PLENARY 4: Nick Enfield. Enchrony: An Essential Frame for Language and Cognition (Central Auditorium)				
10:30-10:50	BREAK (Coffee at 2nd floor lounge and near room 101 in Bldg. G)				
room #	101	103	104	105	108
category	<b>THEME:</b> Stance-stacking in language and multimodal communication (2 <sup>nd</sup> Day)	<b>THEME:</b> Ethnosyntax (Organizer: K. Horie)	<b>THEME:</b> Macro-events, Grammaticalization, and Typology (2 <sup>nd</sup> Day)	motion (Chair: Kazuhiro Kawachi)	creativity (Chair: Vera Zabolotkina)
10:50–11:15	D. Horst Stance as multimodal, dynamic, and intersubjective phenomenon in interaction	K. Horie & J. Kim Negative politeness and the preference for nominalization strategies in Japanese: A contrastive study with Korean	S. De Knop & M. Hermann From lexical meaning to functional role: the case of complex noun-verb phrases	K. Kawachi et al. Speaker's territory as a factor in the use of deictic verbs and verb affixes: The cases of Kupsapiny and Newar	V. Zabolotkina Cognitive mechanisms of linguistic creativity
11:20–11:45	S. Spronck & A. Si Mistaken-belief expressions: a stance-stacking laboratory	S. Rhee When crudity steps into grammar: The case of Korean auxiliary verbs	Y. Chen Macro-events in verb-verb compounds from the perspective of baseline and elaboration: Iconicity in typology and grammaticalization	T. Morita Linguistic deictic meanings beyond gestures: A contrastive study on motion event descriptions in French and Japanese	Y.-M. Oh Do too many linguists spoil the research? Creativity and fixedness in creative uses of proverbial idioms: A cross-linguistic, corpus-driven study
11:50–12:15	L. Vandelanotte Internet memes and the dynamics of stance	K. Kataoka Discursive management of <i>space</i> and <i>textual</i> deictics in Japanese spatial monologues (and beyond)	G. Zhao The grammaticalization of Pleonastic negation—A case study of “chàdiǎnméi” in Mandarin Chinese	Cl. Voirin et al. The encoding of dynamic deixis in motion event: A crosslinguistic exploratory study	T. Okahisa & K. Yamasaki The two ways to the same interpretation of a novel expression: metaphorical and metonymical categorization
12:15–13:15	LUNCH (BIG PAPA or other locations)				
category	<b>THEME</b> (Cont.)	<b>THEME</b> (Cont.)	<b>THEME</b> (Cont.)	translation (Chair: Keiko Tsuchiya)	categorization (Chair: Jürgen Bohnemeyer)
13:15–13:40	T. Janzen et al. The embodiment of stance in narratives in two signed languages	Y. Kimoto Morphological manifestations of hunter-gatherer lifestyle: Word formations and ethno-semantics in Philippine Negrito languages	L. D. Ren Typology of English and Mandarin: Taking spatial stationary events as examples	A. Hijazo-Gascon Cognitive Linguistics and Interpreting in Police Interviews	J. Chen et al. Unconscious effects of language-specific terminology on spatial concepts in bilinguals
13:45–14:10	S. Siyavoshi et al. Facial displays as stance markers in multimodal spoken and signed constructions	Discussion w/ Nick Enfield	N. Liu The Grammaticalization of Chinese Directional Verb 'kǎi': A Constructional Approach	Sh. Song Fluency Development in Simultaneous Interpreting Performance of Trainee Interpreters: The Perspective of Cognitive Fluency	S. Devylder et al. Mapping the body
14:15–14:40	E. Sweetser Embedded viewpoint and stance in gesture and speech: multimodal stance-stacking		E. Soroli Typological differences influence motion event perception: Evidence from similarity-judgment tasks and eye tracking		I. Stasiūnaitė On the motivated polysemy of the Lithuanian PO and the English UNDER
14:45–15:10	Discussion		Discussion		K. Ujiie & M. Ishizuka When locational expressions are not locational: the case of Japanese demonstratives
15:10–15:30	BREAK (Coffee at 2nd floor lounge and near room 101 in Bldg. G)				
15:30–16:50	POSTER SESSION (Learning Commons (Basement of Central Auditorium))				
17:00–18:00	CULTURAL EVENT: Noh (Central Auditorium)				
19:00–21:00	CONFERENCE DINNER (Takarazuka Hotel. Bus shuttles leave at 18:15)				



COFFEE (near room 101 in Bldg. G)

PLENARY 4: Nick Enfield. Enchrony: An Essential Frame for Language and Cognition (Central Auditorium)

BREAK (Coffee at 2nd floor lounge and near room 101 in Bldg. G)

204	205	206	207	208	301
metaphor (Chair: Jamin Pelkey)	change (Chair: Graeme Trousdale)	acquisition (Chair: Nikolas Koch)	<b>THEME:</b> Socio-cognitive approaches to analyzing spontaneous interactions (Organizers: M. Fried, E. Lehečková & J. Jehlička)	Evolinguistics (Chair: Michael Pleyer)	construction (Chair: Laurence Romain)
Sh. Shum & J. Pelkey Cultured Meat or Frankenfood? Toward an Expanded Account of the Education-Persuasion Tension Intrinsic to Conceptual Integration	H. Negi Grammaticalization of temporal meanings in Japanese and Spanish: With special reference to the antonymy in "EARLINESS" and "LATENESS"	M. Surakka Temporally extended self in children. Linguistic and psychological views on the development of future time references.	M. Fried & P. Machač Sound patterns as interpretive clues in spontaneous interaction	J. Nölle et al. Using virtual reality to study language evolution	T. Ungerer Using structural priming to test links between constructions: Caused-motion sentences prime resultatives
E. S. Afreh & H. A. Kyeremeh Metaphors of Formal learning, education and knowledge among Ghanaian students: The Case of Knust	Y. Takahashi Old English subject-verb word order: An intertextual comparison	J. Mažara & S. Stoll The Role of Aspect During the Acquisition of Verb Morphology in Russian: From Item-Specificity to Proficient Use	Th. Chaminade et al. Artificial Conversational Agents to Investigate the Neural Bases of Conversation with fMRI	Th. Matzinger et al. The effects of prosodic cues on word segmentation in an artificial language learning task	S. Hartmann Empirical approaches to competing future constructions: Converging evidence from corpus and experimental studies
X. Liu The Cultural Models of "Happiness" in Chinese: Metaphor, language and identity	Y. Sato From Manner to Temporal Uses: Historical Changes of the English Subordinator As	N. Koch Schemas in first language acquisition: A German traceback study	M. Lelandais & G. Ferré A parametric multimodal approach to subordination in conversation	M. Pleyer & M. Pleyer A Cognitive-Interactional Approach to the Evolution of Linguistic Im/politeness	L. Romain & M. Lemmens The status of alternations: a lexical-constructional interface

LUNCH (BIG PAPA or other locations)

metaphor (Chair: Jurga Cibulskienė)	change (Chair: Masaru Kanetani)	pragmatics (Chair: Kyoko Masuda)	<b>THEME (Cont.)</b>	sociolinguistics (Chair: Ingie Zakaria)	construction (Chair: Seiko Fujii)
J. Cibulskienė & I. Šeškauskienė Constructing attitudinal stance via metaphors: a multi-perspective cognitive approach toward politically contested events	E. W-Ch. Shih A pragmatic construction of two constructions: A corpus-based case study on <i>just because</i>	K. Beeching & L. Crible Crosslinguistic paths of pragmatic development: <i>actually</i> and <i>en fait</i> in British and French children	A. Inbar Visualizing discourse functions: The case of list constructions in Israeli Hebrew	M. J. Serrano The cognitive basis of desubjectivizing constructions: The use of the periphrases <i>haber/tener que</i> + infinitive in Spanish	J. Leino Ordered and unordered constructions: The role and representation of word order in Construction Grammar
S. Mukherjee Metaphorization in Grammatical Gender	W. Kono Constructionalization of <i>Have it (PP) that</i> Construction as English Evidential Strategies	K. Masuda The prosodic features of the interactional particle <i>yo</i> in student-professor conversation	E. Lehečková et al. Interplay of information structure, pitch contour, and gesture in spontaneous interactions	G. Kilp Usage-based approach to computer-mediated Estonian-English-Japanese communication	Th. Herbst Constructionists are not at all easy to please
J. Cibulskienė Cross-linguistic metaphorical representation of the #MeToo movement: Communicating attitudes	E. Mizokami The Current Usage of the Quotative <i>be like</i> in British English	M. Yamaguchi & Ch. Sakurai A Study of Reported Speech by Preschool Japanese Children: Implications for Theory of Mind	B. Nir Constraining Constructions: Resonance and Structure in Interaction	I. Zakaria Self-Perception, Hegemony, and Postcolonial Background: English outside its Natural Environment	S. Fujii & R. Lee-Goldman Frame-based constructional approach to argument structure satisfaction via unselected adjuncts
		P. Palacios & R. Maldonado <i>Tipo</i> (Like)... do you get me?	Discussion	A. Libura et al. Healthcare challenges in memes. A comparative analysis of American, British and Polish humor	

BREAK (Coffee at 2nd floor lounge and near room 101 in Bldg. G)

POSTER SESSION (Learning Commons (Basement of Central Auditorium))

CULTURAL EVENT: Noh (Central Auditorium)

CONFERENCE DINNER (Takarazuka Hotel. Bus shuttles leave at 18:15)

## Aug. 9<sup>th</sup> (Friday morning ~ early afternoon)

8:20–9:00	COFFEE (near room 101 in Bldg. G)				
9:00–10:30	PLENARY 5: Sotaro Kita. <i>Gesture, metaphor, and spatial language</i> (Central Auditorium)				
10:30–10:50	BREAK (Coffee at 2nd floor lounge and near room 101 in Bldg. G)				
room #	101	103	104	105	108
category			categorization (Chair: Verena Minow)	THEME: Causation in discourse and cognition: Crosslinguistic perspectives (Organizers: K. Kawachi, A. Latrouite & J. Bohnemeyer)	THEME: Cross-theoretical Perspectives on Frame-based Lexical and Constructional Analyses: Bridging Qualitative and Quantitative Studies (Organizers: T. Ohori & K. H. Ohara)
10:50–11:15			V. Minow & J. Salzinger "Wen haben wir?" #dasperfektedinner" Conceptualization and categorization of in-group and out-group belonging on Twitter	Introduction	Introduction
11:20–11:45			T. Shortall Saussure revisited: the delineation of <i>langue</i> and <i>parole</i> using a prototype-category model	E. Bellingham Integrating event descriptions in multi-predicate constructions: frame semantics and construal in the English means construction	P. Sambre Multilingual FrameNet and Calabria's mafia: video documentaries as conceptual windows on a transnational economic crime scenario
11:50–12:15				G. You et al. Extracting lexical causatives from discourse	P. Sambre et al. Verbal genericity and null instantiation in Italian and German cut and break sequences
12:15–13:15	LUNCH (BIG PAPA or other locations)				
category	THEME: Language at the mid-level of understanding: The curious case of linguistic representations (Organizers: P. Milin & D. Divjak)	THEME: Evolving linguistics (Organizer: K. Fujita)	motion (Chair: Yukinori Kimoto)	THEME (cont.)	THEME (cont.)
13:15–13:40	Introduction	K. Fujita Syntax, Cooperation and Self-Domestication		F. Gallez & S. De Knop The caused motion construction revisited: theoretical and cross-linguistic perspectives	N. Hamilitch A constructional approach to borrowed bound morphemes in Japanese: With an emphasis on cultural frames
13:45–14:10	J. Newman Questioning the lemma in usage-based linguistics	K. Hoshi A Possible Link between Cognitive Linguistics and the Lennebergian View on Biological Evolution of Language	L. Masson-Collin Motion events across languages: a parallel-corpus investigation of English, French and Japanese spatial expressions	I. Tragel & K. Tomson Estonian causative constructions from the construction grammar perspective	M. Kitazawa & K. H. Ohara Interpretation predicates and contents in frame integration: the case of <i>sasou</i> in Japanese
14:15–14:40	D. Divjak & P. Milin (The) unbearable lightness of (the) English articles	K. Taniguchi On the Emergence of Grammar and Image Schemas: A Cognitive Linguistic View	Y. Deng & J. Chen Move or not Move: An ERP Study on the Processing of Fictive and Actual Motion Events	A. Latrouite & R. D. Van Valin Jr. Causational Interpretation based on Immediate and General Common Ground Frames	M. R. L. Petruck & L. Levin Frame Semantic Parsing Needs Constructions
14:45–15:10		H. Fujita On the Co-evolution of Internalization and Externalization in Human Language	G. Dubois A force-dynamic account of the Finnish verbs of REMAINING: when staying can involve a shift in force dynamics	N. M. Zaika Additional meanings of causal markers in polypredicative constructions	
15:10–15:30	BREAK (Coffee at 2nd floor lounge and near room 101 in Bldg. G)				

Continued to page 13

COFFEE (near room 101 in Bldg. G)

PLENARY 5: Sotaro Kita. Gesture, metaphor, and spatial language (Central Auditorium)

BREAK (Coffee at 2nd floor lounge and near room 101 in Bldg. G)

204	205	206	207	208	301
corpus (Chair: Bert Cappelle)	metaphor (Chair: Antonio Barcelona)	applied linguistics (Chair: Maki Kubota)	multimodality (Chair: Masaaki Kamiya)	<b>THEME:</b> Minority Languages & Cognitive Linguistics: towards a two way relationship (Organizers: S. Devylder & A. Gaby)	
	A. Barcelona Metonymy-guided discourse inferencing. A qualitative study	Y. Lan & S. Kim Making the most of peer review: Is going Anonymous the way forward for Asian learners of English?	R. Augustyn Creating an aura of mystery in multimodal film setting: A cognitive analysis of Denis Villeneuve's <i>Arrival</i> and <i>Blade Runner 2049</i>	Introduction	
M. Barlow & S. Kemmer Subjective/Objective Construal and Individual Preferences	T. Komatsubara Cognitive and cultural preferences of metonymy in Japanese	K. Yang & M. Wang Developmental trajectory of L2 syntactic representation: Evidence from structural priming	S. Tabacaru & R. Becker I'm surprised to hear you say that: The use of <i>raised eyebrows</i> in oral and written contexts	E. Adamou et al. How to speak "geocentric" in an "egocentric" language: A multimodal study among Ngigua-Spanish bilinguals and Spanish monolinguals in a rural community of Mexico	
B. Cappelle et al. Making sense of <i>fake's</i> fickleness: The role of context	Ch. Lu Dynamic Metonymy: perspectives from lexical semantics and Blending theory	M. Kubota The effect of individual factors on second language lexical attrition in bilingual returnee children	S. Tabacaru & Sh. Van Der Mark Crosslinguistic perspectives on the use and meaning of emoji in Asia and Europe	Sh. Wilcox et al. Signed Languages as Minority Languages	

LUNCH (BIG PAPA or other locations)

change (Chair: Kiyoko Toratani)	metaphor (Chair: Tetsuta Komatsubara)	applied linguistics (Chair: Mutsumi Ogawa)	multimodality (Chair: Elise Stickles)	<b>THEME</b> (cont.)	<b>THEME:</b> Integrating iconicity: recent work and future directions (Organizers: M. Dingemanse & A. Verhagen with J. Nölle & Th. Van Hoey)
K. Toratani Naturalization of the Japanese loanword <i>sushi</i> in English	T. Nessel Two stars in the bassoon sky: metaconstructional compounds and metaphor extraction in Norwegian	Y-H. Hu Cross-linguistic Effects in the Teaching and Learning of English Count/Mass Nouns by Mandarin Chinese Speakers		A. Gaby & L. Woods Ethics and collaboration between cognitive linguists and speakers of minority languages	Th. Schwaiger The not so self-evident iconicity of reduplicative word-class derivation
K. Danjo Pejorative derivation from spatiality: A comparative case study of Japanese <i>burabura</i> , <i>daradara</i> and German <i>herum</i>	KJ. Nabeshima The legacy of Primary Metaphor Theory: What to take home and what to build on	M. Ogawa et al. Language Proficiency and Instructional Effects: A Cognitive Linguistic Approach to the Count-Mass Distinction	A. Brown & M. Kamiya The Role of Gesture in Scopal Ambiguity: A Comparison of Japanese and English	L. A. Janda & L. Antonsen North Sámi Possessive Constructions in the Era of Truth and Reconciliation	Th. Van Hoey & Ch. Lu Reduplication as a trigger of intersubjectivity: Mandarin Chinese ideophones and reduplication in the CHILDES corpora
Y. Shibuya A corpus-based diachronic analysis of register variation in English comparatives	X. Tang Developing Metaphoric Concepts with Constructions: A Corpus Based Analysis	Th. S. H. Yau & H. Zhao Bi-directional Transfer in Second Language Idiom Comprehension	M. Avelar et al. Spatial deixis and gestures in Brazilian Portuguese and American English: a crosslinguistic multimodal analysis	S. Devylder Paamese sand drawings: insights into the polysemiotic nature of human communication and revitalization efforts of an endangered practice	M. Imai & J. Kimura Sensitivity to sound symbolism in Japanese Hard-of-Hearing children
V. Glebkin Semantic change from sociocultural perspective	N. Yu & J. Huang Difficulty as Weight and Solidity in English and Chinese	R. H. Taerner The Effects of Conceptual and Semantic Crosslinguistic Influence in Explicit L2 Instruction of Temporal Adpositions	E. Stickles et al. The effects of spatial manipulation and mental imagery skills on gesture production	M. Ponsonnet et al. The respective roles of culture and grammar in shaping emotion metaphors The case of the Gunwinyguan family (Australian, non-Pama-Nyungan) Forename Surname	A. Ćwiek et al. Comprehension of Non-Linguistic Vocalizations across Cultures

BREAK (Coffee at 2nd floor lounge and near room 101 in Bldg. G)

Continued to page 14



## Aug. 9<sup>th</sup> (Friday late afternoon)

room #	101	103	104	105	108
category	THEME (cont.)	THEME (cont.)	motion (Chair: Joel Olofsson)	THEME (cont.)	THEME (cont.)
15:30–15:55	J. Klavan Linguistic representations of constructional alternations: A case study from Estonian	F. Chang Using the P-Chain to understand the Evolution of Language	K. Yamamoto & K. Takahashi Segmentation of complex motion events in two verb-serializing languages	D. Gerasimov Causal markers derived from speech act verbs in the languages of the world	D. Nonaka When alternating verbs fail to alternate: the case of the locative alternation in English
16:00–16:25	N. C. Ellis Essentials of a Theory of Language Cognition	R. Uno Shared Intentionality and the Emergence of Sentence Types in Natural and Artificial Languages	J. Olofsson Cough and joke. Concomitance co-event in Swedish motion constructions.	S. Say Nominal causal constructions: causal chains and syncretism (a typological study)	K. Ohara Frames-and-Constructions Analysis of Japanese and English Bilingual Children's Books
16:30–16:55	Discussion	T. Hashimoto Filling a Gap between Pre-linguistic and Linguistic Pragmatics: An Experimental Semiotic Approach to the Formation of Symbolic Communication Systems with Intention Sharing	N. I. Stolova Motion Events from Latin to Romance: Role of Linguistic Resources in Typological Shift		C. Baker Beyond N, V, and Adj: Frame Semantics and the Closed-class Lexicon
17:00–17:25		Discussion			Discussion w/ M. Hilpert
17:45–	BUSINESS MEETING (room 101 in Bldg. G)				

204	205	206	207	208	301
construction (Chair: Diego Oliveira)	metaphor (Chair: Ning Yu)	applied linguistics (Chair: Katrin Kohl)	multimodality (Chair: Keiko Abe)	THEME (cont.)	THEME (cont.)
	K. Teeri-Niknammoghadam Why 'ahead of Christmas' but not 'ahead of Friday'? On semantics of Finnish FRONT adposition constructions in SEQUENCE IS RELATIVE POSITION ON A PATH metaphor of time	D. Dardon Can Verbal Short-Term Memory Training Lead to Greater Gains in L2 Vocabulary Learning?	I. Hsu Watch! The Olfactory Time Machine! - A Study of Synesthetic Metaphors in Japanese Winespeak-themed Manga	H. Sarvasy et al. EEG in PNG: A report on the neurolinguistics of clause chain processing	A. D. M. Smith & S. Hoefler Iconicity and the origins of symbolism and grammar
A. Shiba Interaction Between Text Genres and Constructions	Y. Ogami On the Experiential Bases of the Two Meanings of Temporal "Saki" in Japanese	A. W. Horvat et al. Demolishing walls and myths: Cognitive salience of literal and metaphorical meanings in L1 and L2 speakers	S. Abe Connecting language, vision and force: Analyzing emotional forces of FRUSTRATION in Japanese manga	S. Spronck Finding a new place for pragmatics in CL through minority languages	J. Nölle et al. Beyond iconicity: aspects of metonymy and indexicality in sign grounding
S. Siltaloppi Greetings from the festival – how listing is used in a signed postcard	G. P. W. Rajeg et al. Linguistic and co-speech gestural patterns of spatiotemporal metaphors in Indonesian		X. Zhao A Multimodal Cognitive Poetic Study of Postmodern Picturebook: <i>The Stinky Cheeseman and Other Fairly Stupid Tales</i>	Discussion	I. Mittelberg Iconicity – embodiment – image schemas: Towards a spectrum of different sources and levels of gesturally enacted schematicity
D. L. de Oliveira Transitive constructions under negation in Russian: a usage-based approach to the genitive-accusative competition	J. Fu & G. Steen Metaphor Use in Aphasia: Evidence from AphasiaBank (Mandarin)		C. Romney Online image searches as indicators of lexical nuance between Japanese and English	Discussion	Th. Van Hoey & J. Nölle Integrating Iconicity (general discussion)
BUSINESS MEETING (room 101 in Bldg. G)					

## Aug. 10<sup>th</sup> (Saturday)

8:20-9:00	<b>COFFEE</b> (near room 101 in Bldg. G)				
room #	101	103	104	105	108
category	<b>THEME:</b> Cognitive perspectives on Linguistic Creativity (Organizers: Th. Hoffmann & A. Bergs)	phonology (Chair: Yoshihiko Asao)	cognitive grammar (Chair: Akira Machida)	<b>THEME:</b> Causation in discourse and cognition: Crosslinguistic perspectives (2 <sup>nd</sup> day)	construction (Chair: Yoshikata Shibuya)
9:00-9:25	Introduction	C. Poppe Cognitive phonology and the accented-unaccented opposition in Japanese	A. Sarkar Understanding Control and Modality: Comparative study between English and Bangla Modals	A. Ariño-Bizarro & I. Ibarretxe-Antuñano Causality in Spanish	H. Kim & G-H. Shin Effects of verb frequency and L1 transfer in L2 processing of English dative constructions
9:30-9:55	G. Trousdale Linguistic creativity and musical improvisation: some similarities and differences	X. Chen & Y. Nan Modularity or non-modularity of pitch deficits in Congenital Amusics? A developmental perspective is the key	L. Yapei The syntactic realizations of the epistemic predicate <i>likely</i> and its Chinese equivalent <i>ke'neng</i> : A corpus-based cognitive study"	Y-T. Lin Causality in Cognition and Language in Taiwanese Southern Min	K. E. Jensen & Y. Shibuya Variation in constructional productivity: The case of English modal constructions
10:00-10:25	P. Uhrig Creative Intentions: The thin line between 'creative' and 'wrong'	S. Rahandaz Progressive Assimilation in Cognitive Phonology: A Case from Iranian Azerbaijani	Y.-N. Wang & Y. Li Subjectivity of Chinese and English Topic Constructions: A Grounding Analysis	K. Kawachi et al. Iconicity in usage: A cross-linguistic study of causative event descriptions	O. O. Silvennoinen Not only contrastive but also mirative? Additive negation constructions in English
10:25-10:45	<b>BREAK</b> (Coffee at 2nd floor lounge and near room 101 in Bldg. G)				
category	<b>THEME</b> (cont.)	grammar and semantics (Chair: Naoaki Wada)	grammar (Chair: Seongha Rhee)	<b>THEME</b> (cont.)	construction (Chair: Toshio Ohori)
10:45-11:10	M. Turner Conceptual Blending as a Source of Creativity in Constructions	S. Sokolova From lexical triggers to contextual cues: Sentence complexity and aspectual choice in Russian narrative sequences	Ch. Maekelberghe A cross-linguistic perspective on 'nominal' vs. 'verbal' construal in English and German	N. Levshina Causatives of the world, unite! How efficiency can explain cross-linguistic generalizations	H. Jiang Speaking of speaking: Construction-coerced change of semantic roles for verbs of speaking in Puyuma (Austronesian)
11:15-11:40	Th. Hoffmann Constructionist Approaches to Creativity	D. Zhang [YAO + V] in Chinese / [Aller + V] in French: prospective aspect or tense of future?	L. Lu A Cognitive Study of Deadjectival Nominalization as Shell Nouns in German Language based on German News Corpus	J. Bohnemeyer Predictability and informativeness in iconicity of complexity: A Gricean perspective	Y. Keromnes As simple as that? A corpus-based contrastive analysis of the [ADJ as NP] and related constructions in English, French and German
11:45-12:10	Discussion	N. Wada On the so-called volitional use of <i>will</i> : Semantic or pragmatic or both?	L. Wu Crossover Effects in English and Chinese	Discussion	D. McColm Exploring recent changes to the Dutch way-construction using a web-based corpus
12:10-13:10	<b>LUNCH</b> (BIG PAPA or other locations)				
13:10-14:40	<b>PLENARY 6: Sally Rice. Cognitive Linguistics and the Study of Indigenous Languages</b> (Central Auditorium)				
14:40-15:00	<b>CLOSING</b> (Central Auditorium)				

Aug 11<sup>th</sup> is an excursion day



COFFEE (near room 101 in Bldg. G)

204	205	206	207	208	301
semantics (Chair: Emiko Kihara)	corpus (Chair: Laura Janda)	pragmatics (Chair: Dennis Tay)	pragmatics (Chair: Elizabeth Riddle)	multimodality (Chair: Sabina Tabacaru)	THEME: Cross-linguistic perspectives on gesture: Recurrency as a basis for comparison (Organizers: S. Harrison & C. Müller)
	M. Montes et al. Checking the adequacy of second-order vector space models of meaning	M <sup>a</sup> S. Peña-Cervel & F. J. Ruiz de Mendoza On hyperbolic scenarios, hyperbolic load, and the potential communicative impact of hyperbolic uses of language	M. Kuha et al. The Social Construction of Public "Apologies"	M.-Y. Kuo A Multimodality Analysis of The Taiwanese History Textbook From 1985 To 2018: The Developing Representation of Colonial Japan	K. Tsuchiya Open hand oblique in female politicians' speech
Y. Sugaya Cross-Linguistic Differences in Taking Another's Perspective: The Case of Adjectives Giving Production	M. Matsui & T. Nessel Addressing the address function: A corpus study of the Russian new vocative	Y. Asai Onomatopoeia as Signs of Naturalness: Semiotics on the Language and Environment Nexus	X. Yuan & A. Sopina Frames, metaphors and morality: Multimodal discourse analysis of the whaling conflict	M. X. Pan A Comparative Study of Two Approaches to Metaphor Identification in Video Ads	S. Harrison Exploring bodily, collaborative, and coupled contexts for recurrent gestures associated with negation: Insights from communicative events in Chinese
Y. Tanaka How Do People Understand Linguistic Empathy? The Case of Japanese Giving Verbs	M. Láznicka & V. Janda Grammatical profiling of Czech nouns: what do cases tell us about nouns' meanings	D. Tay A factor analysis of metaphor functions in psychotherapy	J. Perrez et al. The evolution of metaphors over time: a longitudinal analysis of metaphor usage by Belgian politicians over the period 1980-2017	K.-M. Wessman Multimodal and verbal Finnish internet memes	D. Boutet, A. Morgensstern & Ch. Prisse A cross-linguistic approach to the formal features of recurrent gestures: shrugging in spoken and signed languages

BREAK (Coffee at 2nd floor lounge and near room 101 in Bldg. G)

semantics (Chair: Nathan Hamilitch)	corpus (Chair: Sadayuki Okada)	metaphor (Chair: María Sandra Peña-Cervel)	pragmatics (Chair: Kyoko Ohara)	sign language (Chair: Inez Beukeleers)	THEME (cont.)
Th. Poulton Smelling in English: From perception to description	S. Kim & R. Yeates A corpus-based discourse analysis of the linking adverbial <i>besides</i>	A. Kalda & M. Uusküla Culture and context in translating perception metaphors: Using eye-tracking methodology in English-Estonian empirical research	Q. Lu The function of theme / rheme in the French Presidential New Year Speech	Y. Takashima & E. Kuroda The MEAN constructions in Japanese Sign Language: from causality to inferred evidentiality	R. Lopez-Ozieblo Gesturing to indicate time in L2 speakers of English
K. Hoemann et al. Network Analysis as a Means of Assessing Translatability of Emotion Words	S. Okada On the rise of truncated causal adjuncts in English	C. Rasse Conceptual metaphors in poetry interpretation: A psycholinguistic approach	B. Zhang Interaction of Metaphor and Political Frames in the Language Critique Activity "Unwort des Jahres" (the Non-Word of the Year)	L. Ferrara Linking conversational moves through pointing actions in signed language interaction	L. Hotze Recurrent gestures and multimodal patterns in pre-school children
M. Kumamoto Conceptualization of negative social emotions in French. A Behavioral Profile Approach to <i>honte</i> , <i>honteux</i> , <i>culpabilité</i> and <i>coupable</i>		M <sup>a</sup> S. Peña-Cervel Exploring some metonymy-related figures of thought in the light of cognitive modeling		I. Beukeleers & M. Vermeerbergen On the role of eye gaze in depicting and enacting: A case study of Flemish Sign Language narratives	Discussion w/S. Kita

LUNCH (BIG PAPA or other locations)

PLENARY 6: Sally Rice. Cognitive Linguistics and the Study of Indigenous Languages (Central Auditorium)

CLOSING (Central Auditorium)

## Poster session on Aug. 7<sup>th</sup>

W01	Sh. Hirasawa	<i>Side by side</i> as a preposition	change
W02	T. Hayashi	A Quantitative Perspective on Grammaticalization: The Case of Deverbal Prepositions in English	change
W03	S. Hu	Discourse Functions of “Ke(re)do(mo)” and “Copula+Ke(re)do(mo)” at the Left Periphery (LP) in Spoken Japanese: A Functional Expansion Perspective	change
W04	M. Kawakita	Relation between Japanese character types and grammaticalisation	change
W05	M. Takahashi	A Diachronic Dimension of Grammaticalization: With Historic Examples of Negative Adverbs in English and Japanese	change
W06	T. Wang & Y. Shi	The emergence of passive structure with obligatory agent phrase in Chinese	change
W07	T. Yu	Constructional integration in grammaticalization: A cross-linguistic study of complementizer in Mandarin and English	change
W08	Sh. Xue	A Cognitive Link between Quantification and aspect: The Case of Chinese “Yousuo”	change
W09		cancelled	
W10	Sh. Wu	A corpus-based study of the Chinese synonymous approximatives shangxia, qianhou and zuoyou	corpus
W11	S. Kato & M. Asahara	Exploring metaphorical expressions in Japanese newspaper-article corpora	corpus
W12	R. Kikuchi, S.Kato & M. Asahara	Collecting figurative expressions using indicators and a semantic tagged Japanese corpus	corpus
W13	H. Hwang, Y. J. Hye & H. Kim	How Do Different Processes of Speaking and Writing affect Syntactic Complexity in Child Second Language Production?	corpus
W14	Y. Zhong	Pleasing to the Mouth or Pleasant Personality: A corpus-based study of conceptualization of desserts in online Chinese food reviews	corpus
W15	G. Junčytė	Middle marked intransitives and intransitives with the "complex formant" in Lithuanian: a corpus-based study	corpus
W16	N. Matsumoto	The Complex Interaction of Construal Operations: Multi-verb Sequences in World Englishes	corpus
W17	S.-F. Chung, M-Ch. Lin & Ch.-W. Chen	The Chinese PAINLESS: A Corpus-based Analysis	corpus
W18	Zh. D. & Q. Xu	A Study on Acquisition of Sentence-final Particles among Chinese-speaking Children	acquisition
W19	M. R. Espinosa-Ochoa	The relevance of anchoring and the duration of events in the early acquisition of Spanish verb morphology and its tense-aspect meaning	acquisition
W20	S. Hartmann, A. Quick, A. Backus & E. Lieven	Bilingual language acquisition from a usage-based perspective: A corpus study on the code-mixing of a German-English bilingual child	acquisition
W21		cancelled	acquisition
W22	M. Pleyer	Perspectivation and Pretend Play in Language Acquisition: A Corpus Study	acquisition
W23	M. Takanashi	L1 Acquisition of Japanese Deictic Verbs Iku Meaning ‘to Go’ and Kuru Meaning ‘to Come’: Focusing on Motion Event Description	acquisition
W24	K. Nakamura	The Expression of Motion Events in Japanese and English Narratives: A Developmental Approach	acquisition
W25	A. Bordilovskaya, K. Eguchi, M. Mano & Y. Yoshinari	Inter- and Intra-Typological Variations of the Representations of Complex Trajectories	motion

W26	K. Eguchi, M. Mano, A. Bordilovskaya, Y. Yoshinari & Y. Matsumoto	Cross-linguistic tendency of Path encoding: A production experiment of 14 different Paths in English, Hungarian, Italian, Japanese, and Russian	motion
W27	T. Molés-Cases	The expression of Manner-of-motion in inter- and intratypological translation scenarios: a comic-based analysis	motion
W28	Ch. Lin	Interaction of spatial prepositions ti7, tiam3 and tua3 and verbs in Taiwan Southern Min: From a corpus-based approach	motion
W29	Th. S. H. Yau	Conceptualization of motion event by Chinese-English Bilinguals: A study of difference between Cantonese and Mandarin	motion
W30	Y.-H. Liao	Motion Events in L2 Chinese: verbal and non-verbal behaviour across languages	motion
W31	J. Qu	How Japanese and Chinese advanced learners of English found the frog: A SLA study on rhetorical style of motion events	motion
W32	K. Hill	Applying Cognitive Linguistics to Content and Language Integrated Learning through L2 Polysemous Lexis Research	applied
W33	Y.-D. Lai	Relation between Perception of Sound Symbolism and Effects of a Cognitive Linguistics-based Approach to Vocabulary Learning by Taiwanese EFL Learners	applied
W34	Ch. Niu & A. Cienki	How we marginalised onomatopoeia: Evidence from a multimodal study on Chinese child language	multimodality
W35	K. Margiotoudi, M. Allritz, M. Bohn & F. Pulvermüller	Sound symbolic correspondences tested in human and non-human primates.	evolution
W36	M. Kanetani	So many ideophones in Japanese but less so in English: A three-tier model account	typology
W37	Th. Schlatter & Hs.- H. Ke	Hidden Iconicity in Tones	typology
W38	E. Adamou & Y. Haendler	Nominal tense: An experimental approach	typology
W39	T. Hisayoshi	The One Lexical Argument Constraint- A Comparative Study of Japanese and Korean	typology
W40	Sh. Yu	Semantic maps in typology: the case of resultative constructions	typology
W41	X. Tian & W. Zhang	Chinese Causative Constructions with shi and ling: A Cross-variety Perspective	sociolinguistics
W42	Hs. Ts. Lou	Revisiting Sex and Love in Language and Culture: A Cognitive Linguistic Approach	sociolinguistics
W43	A. Mukherjee	Metonymy: Underspecification and Reduction	metaphor
W44	J. Wang & Ch. Duan	Metaphor and Metonymy, which is more fundamental?	metaphor
W45	J. Yang & M. Liu	How metaphor and metonymy are used in Chinese and English ceramic discourse?	metaphor
W46	R. Zhou, W. Zhang & Y. Cheng	The Schematic Function of Conceptual Metaphor for Discourse Comprehension in Chinese and English Contexts	metaphor
W47		cancelled	metaphor
W48	M. I. Perdana	'Winter is coming': A corpus-based approach to spatiotemporal metaphors in English and Indonesian discourse	metaphor
W49	K. Ito	Emergence of Rhetorical Effect: Figurative Language and Systems Theory	metaphor
W50	A. Tamaru	Simile, metaphor, and their non-interchangeability: Beyond A is like B vs. A is B	metaphor

## Poster session on Aug. 8<sup>th</sup>

T01	H. Zhan & L. Sun	A Cognitive Semantic Analysis of Exteriority in Mandarin	categorization
T02	M. Kajitani	Similative Plurality and Its Related Functions: A Case of Japanese X toka	categorization
T03	S. Mukherjee & A. Mukherjee	Highlightedness in Conceptual System	categorization
T04		cancelled	
T05	Ch. Yang	A Cognitive Study of Nominal Predicate Constructions in Mandarin	cognitive grammar
T06	Y. Yang & Y.-N. Wang	Evidential Perception Verbs and (Inter)subjectivity in English and Chinese	cognitive grammar
T07	Y. Soda	A Cognitive Analysis of Japanese Cause/Purpose Expressions: Contrast with English and Thai	cognitive grammar
T08	T. Tanaka & W. Jeong	The semantics of Japanese passives: When and why do they have adversative meanings?	cognitive grammar
T09	S. Namboodiripad	A gradient approach to flexible constituent order	cognitive grammar
T10	Y. Shen	A Study of Alternate Detachable Constructions in Chinese Idioms	construction
T11	M. Liu	On the argument realization of Mandarin Chinese inverted resultative constructions and its motivation	construction
T12	P. Wu	The Cognitive Analysis and of the Productive Orientation of Subject-predicate Constructions in Mandarin	construction
T13	Ts-Ch. Tsai & Hs-L. Hsu	"It is important but not necessary": Investigating but constructions in native vs non-native corpora	construction
T14	Ch. Sun	The Characteristic of Chinese Popular Constructions from a Cross-linguistic Perspective	construction
T15	T. Ishida	Frame-Based Adjectives: A Proposal for the Third Type of Adjective	construction
T16	Ch. U. Kikuta	A Diachronic Constructional Analysis of the Word Order Restriction Japanese: A Mismatch in Grammatical Constituency	construction
T17	M. Vokáčová & E. Lehečková	Logical metonymy constructions in Czech and Dutch	construction
T18	Hs.-H. Ke & S. Key	Pictures of age: Multimodal frame semantics and different age stages	frame
T19	K. Ko & S. H. Park	Constraint on case alternation in Korean '-ko siphta' construction: A self-paced reading study by L1 Japanese speakers	second language
T20	R. Kim	Effects of L1 Typology to Performance of L2 Statistical Preemption: Korean EFL learners reject 'The lifeguard swam the boy to the shore' more strongly than Chinese EFL Learners	second language
T21		cancelled	
T22		cancelled	
T23	H. Tsuji	Does language interfere with mentalising? : The role of language processing during the false-belief task	processing
T24		cancelled	
T25	F. Aljasser	Root and pattern effects in the processing of spoken non-words in Arabic	processing
T26	Y. Pan	Multimodal Metaphors and Metonymies in Dynamic Multimodal Discourse: A Case Study of China's National Image Promotion Documentary	multimodality
T27	E. Pražmo	Multimodal fictive interaction in verbo-pictorial configurations	multimodality



T28	B. Anible & L. Ferrara	Depicting new referents in Norwegian Sign Language	sign language
T29	K. Masuda & A. Labarca	Developing conceptualization of JSL difficult aspect items through a Cognitive Linguistics—Sociocultural Theory approach	sign language
T30	R. Polo-Sherk	Basics of a Theory of the Expression of Thought in Language	semantics
T31	Q. Cheng	An Ontology-based Cognitive Model of the Mental Lexicon	semantics
T32	H. Shimura, N. Wada & H. Wakamatsu	The indefinite use of the Present Perfect Progressive and its emotional effects	semantics
T33	M. Liu & Zh. Wang	A Relevance-Theoretic Approach to Mistranslation	translation
T34	L. Crible & V. Demberg	Production and perception of underspecified connectives: the effect of genre	pragmatics
T35	Sh. Zhou	Confirmation/agreement Seeking in Talk-in-interaction with special reference to the interrogative particle “HAO” (嚯) in northeastern Mandarin Chinese	pragmatics
T36	M. Yamaizumi	A Cognitive-pragmatic Account of Specificational Sentences	pragmatics
T37	Sh. Kudo	The Interpersonal Function of the Japanese Teen Slang Mazi manzi	pragmatics
T38	N. Arimitsu	In-out orientation for expressing the self and others in Japanese: a case of “uchi” vs. “soto”	pragmatics
T39	R. Mukai	A Cognitive Linguistic Approsach to Ma in Japanese Haiku	pragmatics
T40	E. Rakhilina & P. Bychkova	Linguistic Means for Marking Speech Acts: Discourse Formulae	pragmatics
T41	M. Kuha & E. M. Riddle	Apologies by Individual Citizens for Political Situations	pragmatics
T42	Y. Xu	Corpus-based Comparative Study of PLANT Metaphor in English and Chinese	metaphor
T43	B. Birdsell, N. Tatsuta & H. Nakamura	Curiosity is [image]: A crosslinguistic analysis of metaphor production and interpretation using a multimodal task	metaphor
T44	Hs.-L. Hsu, H.-L. Lai & J.-Sh. Liu	ECONOMY metaphors in political discourse	metaphor
T45	P. Amarinthnukrowh & Y. Sawanakunanon	"The way we corrupt": an experimental approach to metaphorical framing	metaphor
T46	A. Sopina, E. Sigette, F. Krykhtine, X. Yuan & A. Volosiuk	Metaphor Interpretation: a Quest for Cross-cultural Variation	metaphor
T47	Y. Choi, E. Kim & Y. Jeong	How do Mirror Images in Editorial Cartoons Reflect the SELF Metaphor?	metaphor
T48	Y. Jin	A Synchronic Comparative Analysis of Emotion Metaphors of 悲 (bei) /SADNESS in Chinese and German memorial texts	metaphor

## Important information

### Conference Office

- ICLC Conference office is at Room 102 in Building G.
- You can reach the office at +81-(0)70-3344-4685

### On-campus rules

- Food and drink are prohibited within Central Auditorium. Coffee, water, and refreshments are served in Bldg G (in the 2<sup>nd</sup> floor lounge and near Room 101).
- Smoking is strictly prohibited, except in designated smoking areas outside Bldg G and in Bldg B. See our Campus Map.
- Do not litter. Garbage must be disposed of in three categories: burnables, PET, bins/cans.

### Announcements

- **Important announcements** and **notifications of cancellations** will be made on our website and twitter page.

ICLC Website:

<https://iclc2019.site/>

Twitter account:

<https://twitter.com/iclc15>



- A WeChat group will be created for Chinese participants using WeChat. Obtain a QR code at the registration.
- The same channels will be used in the event of **emergencies**, such as a typhoon, an earthquake, and train accidents, which would force changes in our schedule

### Book Exhibits

- Visit the book exhibits at 2<sup>nd</sup> Floor Lounge in Building G. Participating publishers are: **De Gruyter Mouton, John Benjamins, Brill, and Hituzi Syobo.**

### Wi-fi connectivity

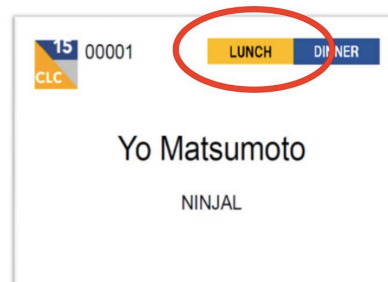
- **Eduroam** (an international roaming service) is available on Kwansei Gakuin campus.

This service can be used only if you have an account at your home institution. No guest account can be provided.

- Starbucks and Seven Eleven in Building G have wi-fi services for their customers.

## Lunches

- A lunch buffet will be offered in a school cafeteria (**BIG PAPA**) from August 7th to 10th for those who purchased tickets (marked on your name tag). **Please show your name tag at the entrance.**  
**Valid only at BIG PAPA.**



- BIG PAPA opens for lunch (12:00-13:30). Other lunch locations open for everyone include:
1. **BIG MAMA:** open for lunch (11:00-14:30) throughout the conference. Near BIG PAPA. Cash only.
  2. **Robin Hood's** (bento): 11:30-14:30 till Aug 9th; in the same building as BIG PAPA. Cash only
  3. **Tokyo-an** (Japanese food): 11:00-15:30 till Aug 10<sup>th</sup>. Cash only.
  4. **Restaurant Poplar:** 11:00-14:00, and 17:00-20:00 throughout; in Kwansei Gakuin Hall; credit card accepted
  5. **Starbucks:** 10:00-17:00 till Aug 9th; in Building G; credit card accepted

## Conference dinner

The conference dinner will be held on August 8th (Thu) from 19:00 to 21:00 at Takarazuka Hotel.

- There will be **bus shuttles** to the hotel **for everyone attending Conference Dinner**. Gather in front of the Central Auditorium with your name tag at 18:15pm after the cultural event.
- There will be **no bus service after the dinner**. You can use a train back to your hotel from Takarazuka-minamiguchi station, just across a street from Takarazuka Hotel, which is on the same line as Kotoen station.
- Train schedule at Takarazuka-minamiguchi Station.

To Takarazuka	21: 5, 12, 20, 27, 35, 42, 49, 56
To Nishinomiya-kitaguchi	21: 5, 13, 20, 29, 36, 43, 50, 56

## **Dinner options**

Visit the links to eating guides on our website.

<https://iclc2019.site/travel-info-and-accommodation/eaters-guide>

## **Cashing**

Cashing service is available at ATMs in Seven Eleven in Building G and near BIG MAMA entrance. A post office near the main gate of the University also has an International ATM service.

## **Health concerns**

- Visit the conference office for health issues. Building G has two unstaffed emergency rooms with a bed. Ask our office about their locations.
- Osaka medical net for foreign visitors: <https://www.mfis.pref.osaka.jp/omfo/>
- Here are some major hospitals in the area

### Local

Nishinomiya Municipal Central Hospital   <http://inhos.net/clinic/1445.html>

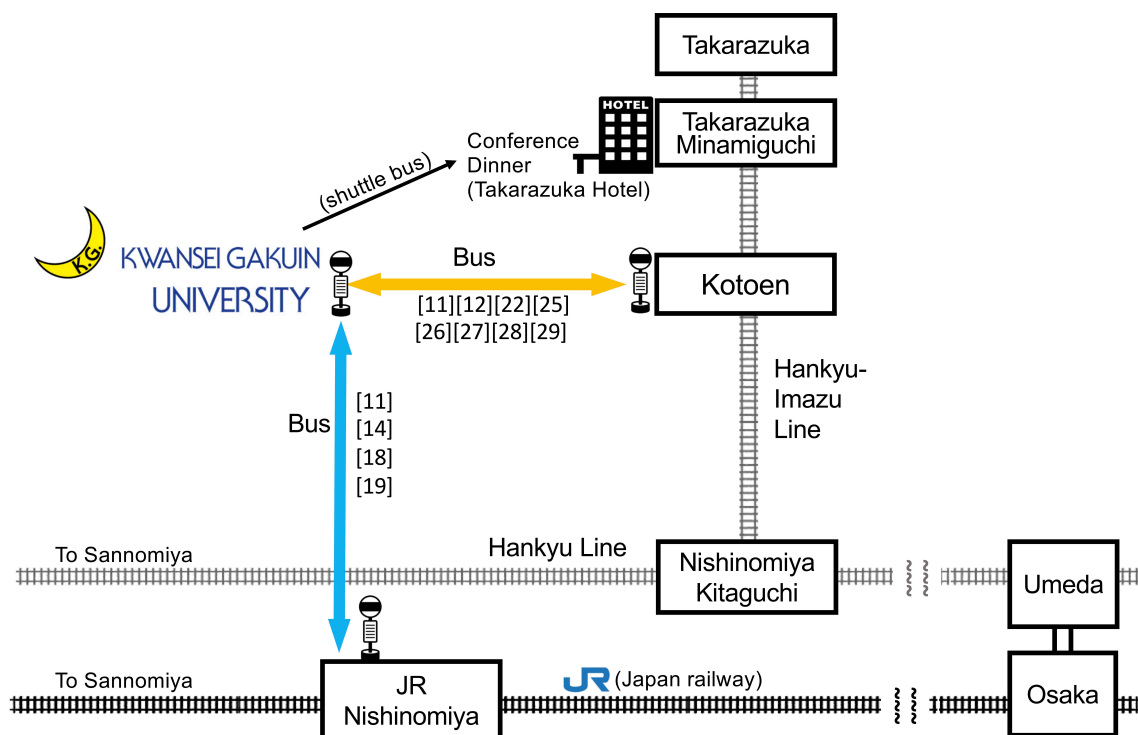
### Hospitals with English websites in the larger Kansai Area

Kobe Kaisei Hospital   <http://www.kobe-kaisei.org/english>

Yodogawa Christian Hospital (Osaka)   <http://www.ych.or.jp/en/>



## Transportation (Railways, taxis & buses)



**Hankyu railway:** (see <https://www.hankyu.co.jp/global/en/>)

**JR:** (see <https://www.westjr.co.jp/global/en/>)

For directions, use **Google Maps Transit**:



<https://maps.google.com/landing/transit/index.html>

*WARNING: the bus stop for Kwansei Gakuin University on google map is not correctly shown. Get off at "Kwansei Gakuin" stop.*

For train status information (delay, cancelation, etc.), see the following webpages:

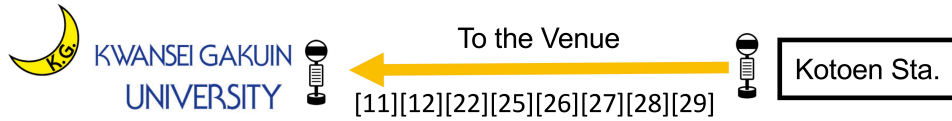
Hankyu: <https://www.hankyu.co.jp/railinfo/en/>

JR West: <https://global.trafficinfo.westjr.co.jp/en/kinki>

### Taxi/cab

- A taxi from Hankyu Nishinomiya-kitaguchi Sta. to Kwansei Gakuin is about 1,100-1,500 yen.
- DiDi is an iOS and Android application to arrange a taxi, in the way similar to Uber and Chinese DiDi. English mode is available.

## Bus schedule

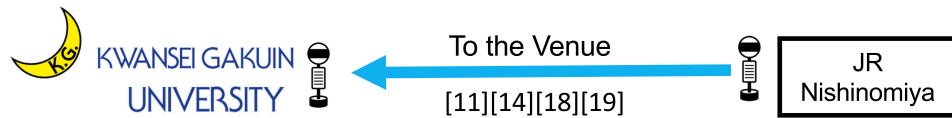


### Weekdays (\*additional services may be available)

5 AM	51
6	06 16 26 29 36 46 55 58
7	00 05 10 15 20 25 28 30 35 40 45 50 55 58
8	01 06 16 23 26 31 36 43 46 53 56
9	01 06 16 26 41 56
10	01 11 16 26 41 56
11	01 11 16 26 41 56
12 PM	01 11 16 26 41 56
1	01 11 16 26 41 56
2	01 11 16 26 41 56
3	01 11 16 26 41 56
4	01 11 16 26 41 51 56
5	11 16 26 41 56
6	06 16 20 23 29 36 40 46 58
7	10 22 34 42 47 54
8	10 25 40 47 55
9	10 25 40 47 55
10	10 27 51
11	14

### Saturday

5 AM	
6	13 28 42 49 55
7	06 16 21 26 36 46 56
8	01 06 11 21 31 36 41 51
9	01 06 11 21 31 41 51
10	01 06 16 31 46
11	01 06 16 31 46
12 PM	01 06 16 31 46
1	01 06 16 31 46
2	01 06 16 31 46
3	01 06 16 31 46
4	01 06 16 31 46
5	01 06 16 31 46
6	01 06 16 31 46
7	01 06 16 31 46
8	01 16 27 46
9	01 16 27 46
10	05 17 51
11	16



### Weekdays

6 AM	15 35 45 55
7	05 15 25 35 40 45 50 55
8	00 05 10 15 20 25 30 38 53
9	08 23 38 53
10	08 18 23 33 38 53
11	08 20 23 38 53
12 PM	08 23 33 38 53
1	08 20 23 38 53
2	08 23 38 53
3	08 20 23 38 53
4	08 23 38 53
5	08 23 33 43 53
6	03 13 23 33 43 53
7	03 13 18 23 33 43 53
8	08 18 23 38 53
9	08 18 23 38 53
10	08 24 46
11	06 24 33

### Saturday

6 AM	43 58
7	13 28 43 58
8	01 13 28 43 58
9	13 28 43 53 58
10	13 28 43 58
11	13 28 43 58
12 PM	13 28 43 58
1	13 28 43 58
2	13 28 43 58
3	13 28 43 58
4	13 28 43 58
5	13 18 28 43 58
6	13 18 28 43 58
7	13 18 28 43 58
8	13 18 28 43 58
9	13 18 28 43
10	03 23 43
11	03 33



From the Venue

[11][12][22][25][26][27][28][29]



Kotoen Sta.

### Weekdays

6 AM	03	19	34	44	53	54						
7	04	14	23	24	34	44	53	54	59			
8	04	09	13	19	24	29	33	39	44	50	50	57
9	12	27	39	42	50	57						
10	12	27	38	42	51	57						
11	12	27	38	42	50	57						
12 PM	12	27	38	42	51	57						
1	12	27	38	42	50	57						
2	12	27	38	42	49	57						
3	12	27	38	42	50	57						
4	12	27	38	42	49	57						
5	12	27	42	52	53							
6	02	12	15	22	29	32	42	52				
7	02	12	22	32	36	42	43	52				
8	02	11	26	36	41	47	56					
9	11	26	36	41	47	56						
10	11	26	42									
11	04	24	42	51								

### Saturday

6 AM	15	45										
7	01	02	17	32	46	47						
8	02	17	19	32	47	49						
9	02	17	32	47	50							
10	02	17	32	47	49							
11	02	17	32	47	50							
12 PM	02	17	32	47	49							
1	02	17	32	47	50							
2	02	17	32	47	49							
3	02	17	32	47	50							
4	02	17	32	47	49							
5	02	17	32	36	47	53						
6	02	17	32	36	47	53						
7	02	17	32	36	47	53						
8	02	16	31	36	46	52						
9	01	16	31	36	46							
10	01	21	41									
11	01	21	51									



From the Venue

[11][14][18][19]



JR  
Nishinomiya

### Weekdays

5 AM	57											
6	12	22	32	42	52							
7	02	05	07	12	17	22	27	32	37	42	47	52
8	02	05	13	23	30	33	43	50	53			
9	00	03	13	23	33	48						
10	03	18	23	33	48							
11	03	08	18	33	48							
12 PM	03	18	23	33	48							
1	03	08	18	33	48							
2	03	18	23	33	48							
3	03	08	18	23	33	48						
4	03	18	23	33	48	58						
5	03	18	33	48								
6	03	13	23	27	30	36	43	47	53			
7	05	17	29	41	54							
8	01	16	31	53								
9	01	16	31	53								
10	01	16	57									
11	20											

### Saturday

5 AM												
6	19	34	48	55								
7	01	13	23	33	43	53						
8	03	13	18	28	38	43	48	58				
9	08	13	18	28	38	48	58					
10	13	23	38	53								
11	08	13	23	38	53							
12 PM	13	23	38	53								
1	08	13	23	38	53							
2	13	23	38	53								
3	08	13	23	38	53							
4	13	23	38	53								
5	13	23	38	53								
6	13	23	38	53								
7	13	23	38	53								
8	22	33	52									
9	22	33	52									
10	11	23	57									
11	22											









**ICLA** INTERNATIONAL  
COGNITIVE LINGUISTICS  
ASSOCIATION

**JCLA** 日本認知言語学会  
The Japanese Cognitive Linguistics Association



DE GRUYTER  
MOUTON



関西学院大学  
KWANSEI GAKUIN UNIVERSITY



Evolinguistics

**db** JOHN BENJAMINS  
PUBLISHING COMPANY

公益財団法人  
中内カ コンベンション振興財団  
Tsutomu Nakauchi Foundation

 **NINJAL**  
Crosslinguistic Studies

公益財団法人  
京都大学教育研究振興財団